

UDO ARCHIVE

EXPRESS

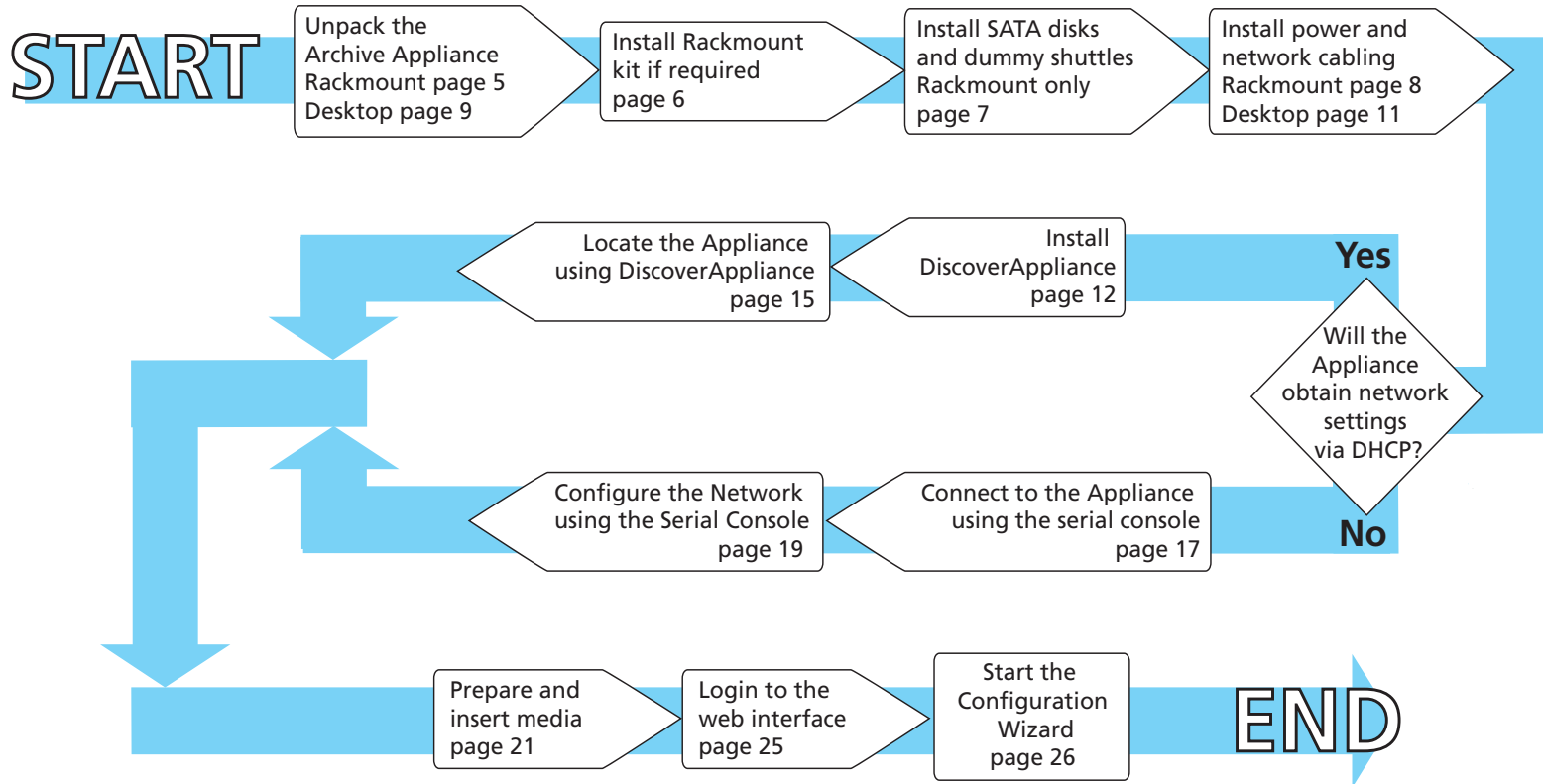
INSTALLATION GUIDE



Plasmon

The Archive Appliance Express installation process summary.

This diagram provides an overview of the Archive Appliance Express and Archive Appliance Express Desktop installation process. For more detailed information on performing each step, refer to the relevant page number in the *Archive Appliance Express Installation Guide*.



Legal information

Copyright statement

No part of this publication may be reproduced in any form or by any means or used to make any derivative, such as translation, transformation, or adaptation, without permission from Plasmon PLC.

Trademarks

Plasmon, UDO, Archive Appliance, Archive Appliance Express, Discover Appliance, NetArchive, DiskArchive, Archive File Manager, Enterprise Active and **Business Archive Maturity Model**. are registered trademarks of Plasmon PLC Copyright 2008.

Other names and/or trademarks belong to their respective proprietors.

Limited warranty

Plasmon PLC makes no representation or warranties with respect to the contents or use of this user's guide, and specifically disclaims any express or implied warranties of merchantability or fitness for any particular purpose.

Further, Plasmon PLC reserves the right to make revisions on this documentation without obligation to notify any person or entity of such changes.

Changes

The material in this user manual is for information only, and is subject to change without notice.

Plasmon PLC reserves the right to make changes in the product design and installation software without reservation and without notification to its users.

Additional information may be obtained from your supplier, or from the address on the back cover of this guide.

Overview

The UDO Archive Appliance Express™ Installation Guide provides all the information needed to install and configure the Archive Appliance Express. The installation fold-out provides an overview of the setup process and refers to detailed procedures within this guide.

For further information on any of the procedures contained in the manual please refer to the [Archive Appliance Express Administrator's Guide](#) or the [Archive Appliance Express Operator's Guide](#).

Hardware Installation (AAE Rackmount)

Unpacking the AA Express

The following items are included in the AA Express package.

Important: Verify that all the items listed are present before beginning installation. Contact your supplier if any items are missing.



AA Express enclosure



SATA disk shuttle



Spare disk shuttle

Plus:

- 1 x Ethernet Cable
- 1 x AC Power Cable
- 1 x AA Express Installation Guide (this document)
- 1 x AA Express Resources CD
- 1 x AA Express User Training CD
- 1 piece x UDO WORM or UDO2 WORM Media
- 5 x UDO Media Labels
- 1 x Rack Mount Kit
- 1 x Declaration of Conformity
- 1 x Warranty Sheet

Installing the rack mount kit

If the AA Express is to be installed in a rack unit, the rack mount kit should be fitted and the unit installed by following the [Rack Mounting Guide](#), included in the Rack Mount Kit.



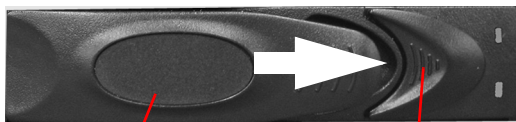
Installing the SATA disk drives and spare shuttles

The AA Express is equipped with two, three or four SATA disk drives which are mounted into drive shuttles for ease of removal. The disks are supplied pre-mounted into the shuttles but are packed separately from the AA_Express and must be installed prior to powering up for the first time. In addition, empty shuttles are provided to ensure all drive bays are filled.

1. Remove the SATA disk and shuttle assembly from the anti-static bag.

Caution: Handle the SATA disks with care, as damage may result in unreliable operation and reduced lifespan.

2. Click the **Lock release button** to the right. The **Drive tray handle** will pop open. Pull the **Drive tray handle** until it is pointing forward at a right angle to the shuttle.



Drive tray handle

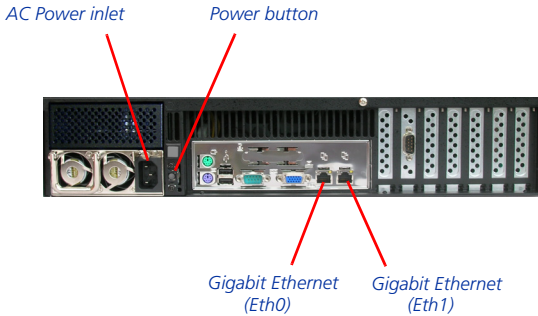
Lock release button

3. The SATA disks may be installed in any available slot. Slide the shuttle all the way into the unit - ensure that the **Drive tray handle** is still pointing outward.



4. Push the **Drive tray handle** closed until the lock engages.
5. Repeat the above for each drive/shuttle to be installed.
6. Spare disk shuttles should be placed in any remaining open disk slots.

Installing the power and network cabling



AA Express rear panel

1. Connect the Ethernet cable to the *Eth0* port.

Note: The second Ethernet (*Eth1*) port may also be connected if required. A second Ethernet port can be used on the AA Express for port bonding, to provide load balancing or failover protection. For further information, refer to the *Plasmon UDO Archive Appliance Express Administrator's Guide* located on the Resource CD or on the Plasmon Technical Support website: <http://www.plasmontech.com/customer/>

2. Connect the supplied power cable to the AC power inlet.
3. Press the power button, on the rear of the AA Express, to power on the unit.

Note: The AA Express takes approximately three minutes to initialize.

Hardware installation (AAE Desktop)

Unpacking the AAE Desktop

The following items are included in the AAE Desktop package.

Important: Verify that all the items listed are present before beginning installation. Contact your supplier if any items are missing.



AAE Desktop enclosure



SATA disk drive shuttles



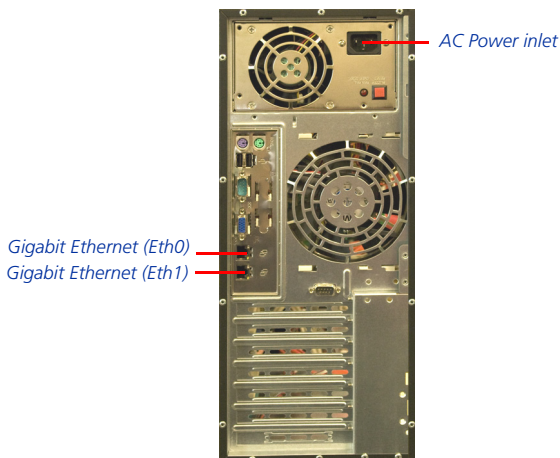
Spare disk shuttle(s)

Plus:

- 1 x Ethernet Cable
- 1 x AC Power Cable
- 1 x AA Express Quick Start Guide (this document)
- 1 x AA Express Resources CD
- 1 x AA Express User Training CD
- 1 x UDO WORM or UDO2 WORM Media
- 1 x UDO Cleaning Cartridge
- 5 x UDO Media Labels
- 1 x Declaration of Conformity
- 1 x Warranty Sheet

Note: The Archive Appliance Express Desktop is supplied with the SATA Disks and spare drive shuttles pre-installed.

Installing the power and network cabling



AAE Desktop rear panel

1. Connect the power cable to the AC power inlet.
2. Connect the Ethernet cable to the Ethernet (Eth0) port.

Note: The second Ethernet (Eth1) port can also be connected now, if required. A second Ethernet port can be used on the AAE Desktop for port bonding, to provide load balancing and fail over protection. For further information, refer to the *Plasmon UDO Archive Appliance Express Administrator's Guide* located on the Resource CD or on the Plasmon Technical Support website: <http://www.plasmontech.com/customer/>

3. Press the power button on the front of the AAE Desktop to power on the unit.
The AAE Desktop takes approximately three minutes to initialize and then be ready for use.

Establishing a network connection

The Archive Appliance can be configured for use on networks using Dynamic Host Control Protocol (DHCP) or when no DHCP server is present - see page 18.

Networks using DHCP

The DiscoverAppliance™ utility is supplied on the Archive Appliance Resource CD-ROM and is used to locate the Appliance on the host network.

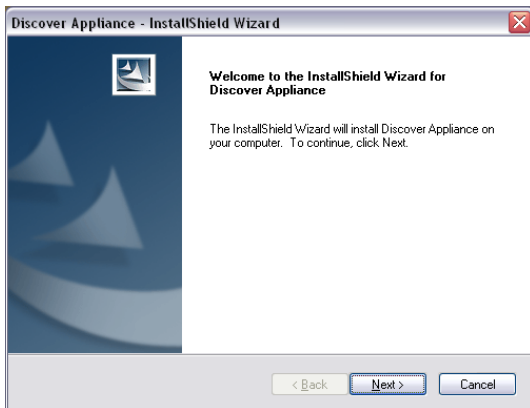
Installing DiscoverAppliance

1. Insert the Archive Appliance Resource CD into the CD-ROM drive of a PC on the same network as the Appliance.

Note: DiscoverAppliance can also be downloaded from the Plasmon Technical Support website:
<http://www.plasmontech.com/customer/>

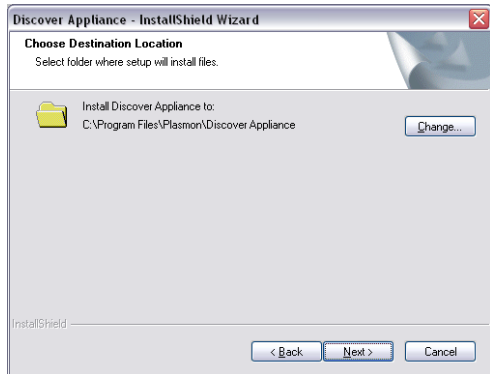
Browse the CD and locate the DiscoverAppliance directory. Start the application **setup.exe**

2. Click **Next** to begin the installation.

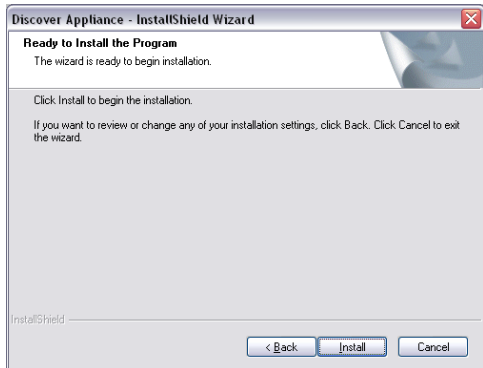


Note: The installer detects the current OS and automatically installs the correct DiscoverAppliance version. If the correct version of Java VM is not detected on the system, the installer will issue a warning. Java VM version 1.5 or above should be installed prior to using the DiscoverAppliance Application.

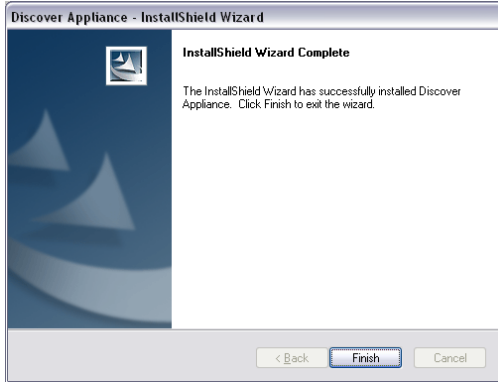
3. Choose an installation directory and click **Next**.



4. Click **Install**. DiscoverAppliance will now install automatically.



5. When the installation has finished click **Finish** to close the installer.



DiscoverAppliance is now ready for use.

Locate the Archive Appliance using DiscoverAppliance

To locate the Appliance on your network:

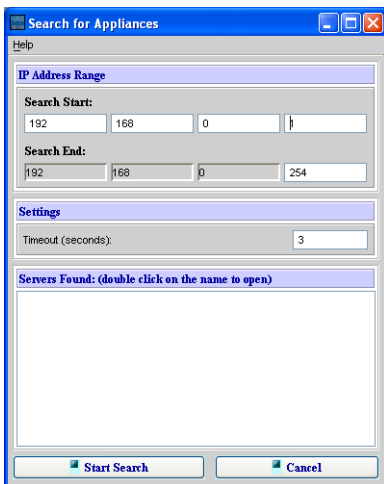
1. Open the DiscoverAppliance utility:
Double-click the DiscoverAppliance icon:



DiscoverAppliance

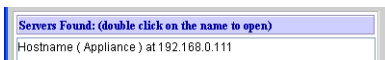
Or click

Start > Programs > DiscoverAppliance > DiscoverAppliance.exe



2. Enter an **IP Address Range** to search and, if required, a **Timeout** setting. Click **Start Search**.

Note: Ensure that the IP address range being searched is set to the same subnet as the host network the Appliance is on.



When the search is complete, double-click on the Appliance. The web interface will launch in your default web browser.

Note: This IP address should be reserved for the Appliance on your DHCP server.

Networks without DHCP

By default the Appliance attempts connection using DHCP. If this connection is not made in three attempts, the unit will automatically default to a static IP address.

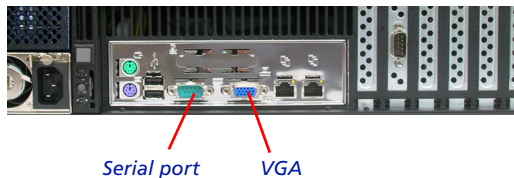
The static IP address must be changed using the a serial console before the Appliance is accessible on the host network.

Note: The factory-set static IP address and Netmask can be found on the rear cover of the Appliance Resource CD case. The IP addresses are in the format 169.254.X.X, the Netmask is set to 255.255.0.0

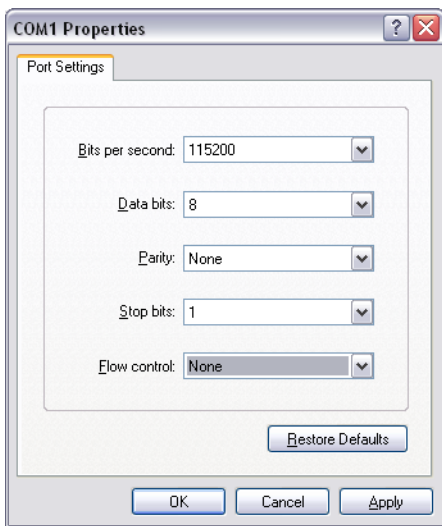
The following section describes how to configure the Appliance using the Serial console interface.

Connecting using the serial console

1. Connect the supplied null modem serial cable to the Serial port, shown below:



2. Connect to the serial console interface using a terminal emulator, such as Microsoft Windows HyperTerminal, using the following settings:



Note: Emulation should be set to VT100J. ANSI is not supported.

Configuring the network using the Serial Console

The root password is required in order to access the Serial console interface.

Note: There may be some delay before the Console Menu is available and no visual indication that the connection is successful and the Console Menu is waiting for password entry.

1. Enter the root password. The default password for the serial console interface is *hello123*.

The Console Menu is displayed:

```

Console Menu
View System Information
Configure TCP/IP Information
Update Software
Restore Factory Defaults
Switch System console to Serial Console
Change root password
Reboot System
Exit to command prompt

Press [Enter] to go to Configure TCP/IP Information.
This may take a while to get the System TCP/IP Information._

```

2. Select **Configure TCP/IP Information**.

The TCP/IP Console Menu is displayed:

```

Console Menu
IP Address          192.168.NNN.NNN
Netmask
The Primary DNS    192.168.NNN.NNN
The Secondary DNS  192.168.NNN.NNN
The Tertiary DNS
Gateway
Hostname          defaulthost
Enabled           Yes
DHCP              No
Bond              Yes
Link Status       Up
Save and Back
Do not save and Back

This is the IP Address of the Port 0.
Press [Enter] to modify the setting._

```

3. Select **DHCP**. Set to **No**.

4. Contact your system administrator for the **IP address** and **Netmask** suitable for your network.
5. Enter the **IP Address, Netmask and Global Default Gateway**.
6. Select **Save and Back** to return to the Console Menu.

Inserting UDO media

This section describes how to insert UDO Data or Backup media into the AA Express. It covers:

- Inserting UDO RW media for backup purposes. Backup UDO RW media can be identified by its **Grey** cartridge case.
- Inserting UDO WORM or Compliant UDO WORM media for user data archiving. UDO WORM media can be identified by its **Blue** cartridge case.

Before beginning, please read the following important guidelines on handling and storing UDO media:

Media handling

Always adhere to the following guidelines:

- Handle UDO media with care
- Store in dry conditions, away from direct sunlight and heat sources in the sleeve in which it was supplied.

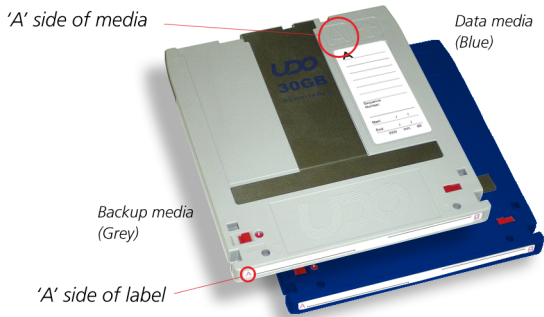
The table below shows the operating conditions for UDO media:

Table 3-1: UDO operating conditions

Parameter	Value/range
Operating Temperature	5 to 45 °C
Operating Humidity	5 to 90% RH (non-condensing)

Preparing the UDO media

1. Remove all packaging from the media and remove the media from its protective sleeve prior to inserting into the Appliance.
2. The UDO media must have a unique barcode of the approved format centred on the spine of the disk. Ensure the barcode label is present, appears undamaged and is correctly oriented as shown below.



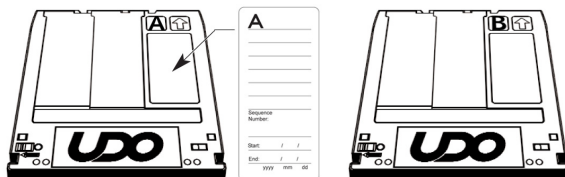
Media labeling

Each piece of UDO Media used in the AA Express is identified by a sequence number. Media must be labeled and numbered prior to use.

When new media is requested by the AA Express:

1. Remove the UDO media from the packaging.
2. Attach the supplied label to side A of the media.

Note: Sides A and B of the media are identified by the letters embossed on the casing.



3. Write the sequence number indicated by the media request on the media label.

Note: When not in use, UDO media should be kept in the protective sleeve supplied.

Inserting the media

Note: AA Express models equipped with a UDO60 drive feature a drive door to protect against dust ingress. Press the drive button to open the door before inserting media into UDO60 drives.

1. Hold the media at the rear of the cartridge with the embossed "A" on the casing facing upwards and the "A" mark on the barcode label to the left. Insert in the direction of the arrow (media shutter forward) as shown:



Important: The shutter on the media should not be opened manually as this exposes the media to potential contaminants.

2. Check that the web interface **System - Status** page to ensure that the media has initialized correctly and is ready for writing.

Media management



Media loaded: 001 side A

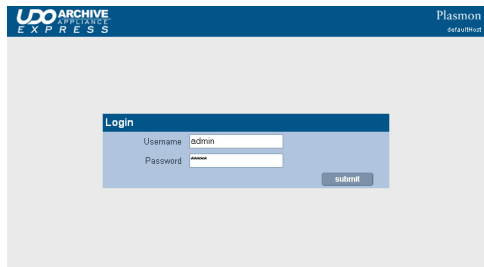
No action required

Login to the web interface

Access the Web interface

1. On a LAN-attached client, open a Web browser window (e.g. Microsoft Internet Explorer or Mozilla Firefox).
2. In the URL field, enter the IP address of the Appliance. e.g:
http://192.168.0.111

The web interface **Login** page is displayed:



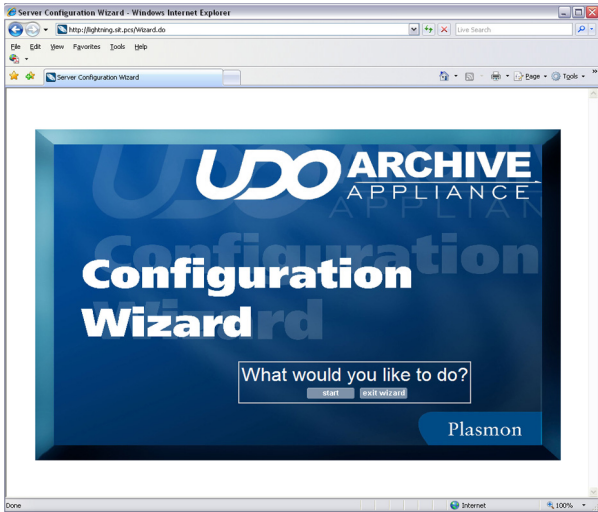
3. Enter the **Username** and **Password**.

*Note: The default username and password is **admin**.*

4. Click to login.

The Archive Appliance Configuration Wizard

When logging on to the Appliance web interface for the first time, the system displays the Archive Appliance Set-Up Wizard.



Note: Pre-configured Archive Appliances will not display the Set-up Wizard when powered up for the first time.

Click **Start** to begin the Wizard and follow the on-screen prompts to set-up your Appliance.

Note: Clicking **Exit Wizard** displays the web interface **System - Status** page.

Warning: Once the Wizard has been closed, it is not possible to return to the Wizard later. Advanced users may wish to configure the Appliance manually. However it is recommended that all steps of the Wizard be completed fully in order that the Appliance is initially configured correctly.

The Archive Appliance Set-up Wizard guides the Administrator through the steps necessary to bring the Archive Appliance to operational readiness. The Wizard configures:

- Network Settings
- Administration username and password
- System Alert Notifications (SMTP or SNMP)
- Date and Time Settings
- Network Services
- User Authentication settings
- Archives and unmanaged volumes
- Data protection settings
- Remote Management services.

Further information on manually configuring these settings can be found in the [Archive Appliance Express Administrator's Guide](#).

Once the Set-up Wizard is complete, the Archive Appliance is ready for use.

Remote Archive Manager

The Remote Archive Manager is included with every UDO Archive Appliance starting with release 4.11. The Remote Archive Manager provides a high-speed and secure way to monitor, manage, and service your standalone Plasmon UDO Archive Appliance.

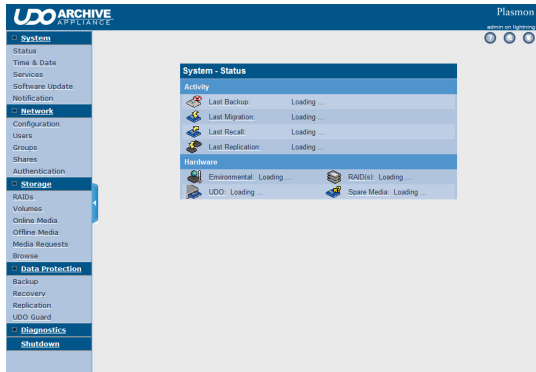
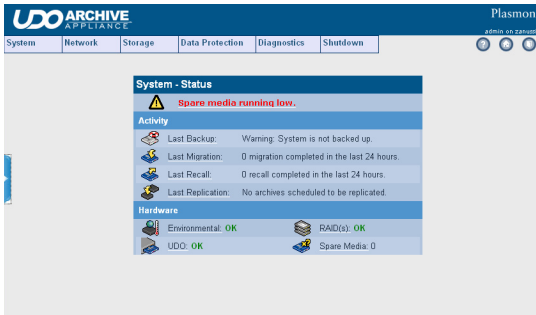
Remote management services are enabled by default. Upon installation, the UDO Archive Appliance will automatically send alerts to the Plasmon Service team. This allows Plasmon Support to proactively detect and resolve any problems that could cause an outage.

The remote management service alerts will be evaluated by an authorized Plasmon Technical Support Engineer who may request access to the UDO Archive Appliance via a secure remote session if the warranty has been registered. See the [Archive Appliance Express Administrator's Guide](#) for further details.

Further information

A brief overview of the web interface

The Web interface home page displays an overview of the current status of the Appliance and provides access to all of the system configuration and monitoring functions of the web interface via a drop-down menu bar or side menu bar.

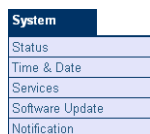


The web interface menu bar

The menu bar provides access to all of the system configuration and monitoring functions, as well as the on-line help. (drop-down menu bar shown).



Move the pointer over a top-level menu item to reveal submenu options:



Below is a brief description of each menu's primary functions:

Table 3-2: Web interface menu bar

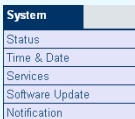
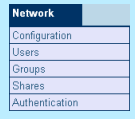

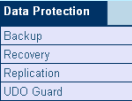
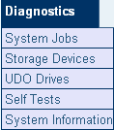





Menu/icon	Use to
	Monitor the Appliance' status, set the time & date, monitor and configure the services, update the system software and configure alert notifications
	Define the network configuration, users, groups and shares
	Configure RAID's, volumes and the library, browse the volume, manage offline media and monitor media requests

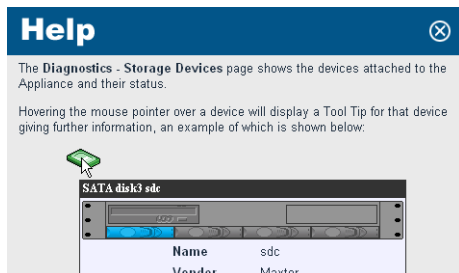
Table 3-2: Web interface menu bar


Menu/icon	Use to
	Perform disaster recovery and configure replication
	Monitor system jobs and devices (disks, libraries, etc.), perform self tests, view system information (software version, serial numbers, hardware revisions, etc.) and create a log file bundle
	Reboot or shut down the Appliance.
	Display context-sensitive online help.
	Return to the Web interface System - Status page.
	Log out of the current Web interface session.

On-line help

Each page of the Web interface has an on-line help page associated with it. To access the on-line help:

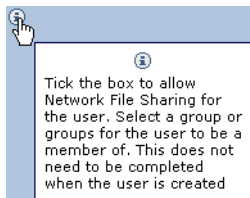
1. From the relevant page, click the  icon.
The on-line help page will open in a pop-up browser window:



2. Click the  icon to close the window.

Tool tips

Tool tips are available wherever the ⓘ icon is found. Hover the mouse pointer over the icon to view the tool tip for that item:



More help

For further information, refer to the:

- *Plasmon UDO Archive Appliance Administrator's Guide*
- *Plasmon UDO Archive Appliance Operator's Guide.*

or the Plasmon Technical Support website:

- <http://www.plasmontech.com/customer/>
-

Worldwide Technical Support

Europe, Africa and Middle East

Tel: +44 (0)1763 262963

Fax: +44 (0)1763 264407

Web: <http://www.plasmontech.com>

Email: emea.support@plasmon.com

North America, South America and Asia/Pacific

Tel: +1-877-585-6793 or +1-719-593-4437

Fax: +1-719-593-4192

Web: <http://www.plasmontech.com>

Email: tech.support@plasmon.com

Sales

Plasmon Data Limited

Whiting Way,

Melbourn

Hertfordshire

SG8 6EN

United Kingdom

Tel: +44 (0)1763 264400

Fax: +44 (0)1763 264444

Web: <http://www.plasmon.com>

Email: emea.sales@plasmon.com

Plasmon US

370 Interlocken Blvd.,

Suite 600,

Broomfield,

CO 80021

United States of America

Tel: +1-720-873-2500

Fax: +1-720-873-2501

Web: <http://www.plasmon.com>

Email: sales@plasmon.com

Plasmon